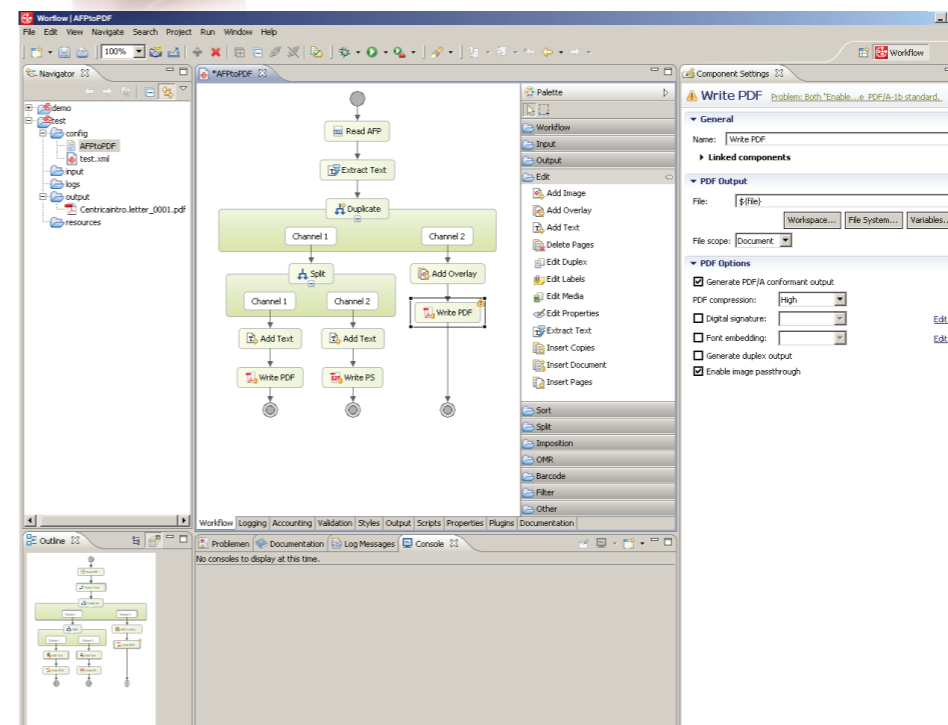


## +PReS Enhance

Features Optimization	Specifications	Benefits
	Compress PS and PDF Reduced redundancies produced by repetitive fonts and images	Improved print speeds Improved file download speeds Reduced digital storage
Repurpose	Format Conversion - Input: AFP, PDF, PS, TIFF, LINE DATA - Output: AFP, PDF, PDF/A, PS, TIFF TextRestore	Multi-channel distribution: - Web, email, print, archive Full text searchability
Re-engineer	Extract/Insert OMR Insert barcodes/2D codes Split Merge Sort Insert/Extract pages, images, text Apply business logics	Improved operational efficiency Personalized output Integration with various hardware or system Quickly adaptable to changing administration



## +PReS Enhance



PrintSoft Designer in +PReS Enhance uses drag and drop to configure simple and complex workflows quickly and easily. Minimal scripting is required.

### ABOUT +PReS Enhance

+PReS Enhance is a component based software designed to simplify complex multi-source printing processes using user-friendly composition tools and interface. The software offers a flexible solution for centralized management of high and very high volume document output. Its powerful document re-engineering functions improve optimization, merging, conversion and revision of composed documents from any application.

+PReS Enhance also integrates with organisations' existing hardware and systems to improve operational efficiency and enhance customer experience.

## For your Convenience

### Postal Sorting

Award nominated postal sorting function, gives you the choice of conditionally processing to select the lowest cost postal service provider depending on a range of user definable criteria. Customers using this feature gain postal cost savings between 20 - 40%!

### White Paper Office

Eliminate the hidden costs of pre-printed paper. Using +PReS Enhance, corporate logos, letterheads, and other fixed content are added digitally to documents before printing. Checking paper trays for the correct pre-printed paper is no longer necessary: only plain paper is used. All documents are printed on-demand.

### Drag-and-drop GUI

Easiest user interface on the market. The intuitive GUI makes it easy to configure, validate, and implement workflow requirements as required. This ease of use delivers real time solutions accurately, as need and fast.

### Scripting option with JavaScript

This options uses JavaScript to allow complexity to configurations by creating endless possibilities. Both simple and elaborate scripting can be handled.

### Independent Platform

+PReS Enhance fits into any environment. Use JavaScript with integration into systems and extract/insert information.

### Connection to +PReS Automate

+PReS Enhance can be connected to +PReS Automate in order set up automation of documents' various processes from data receipt to enveloping.

### Centralized Printing System

Cut down printing, labor and handling costs

### Endless Communications Customisation Possibilities

Customise clients' communications and therefore improve their satisfaction, leading to better response rates.

### Documents Preprocessing

Allow preprocessing of documents before mailing. This will lead to postal costs savings, as mailing content will be optimized to meet specific requirements.

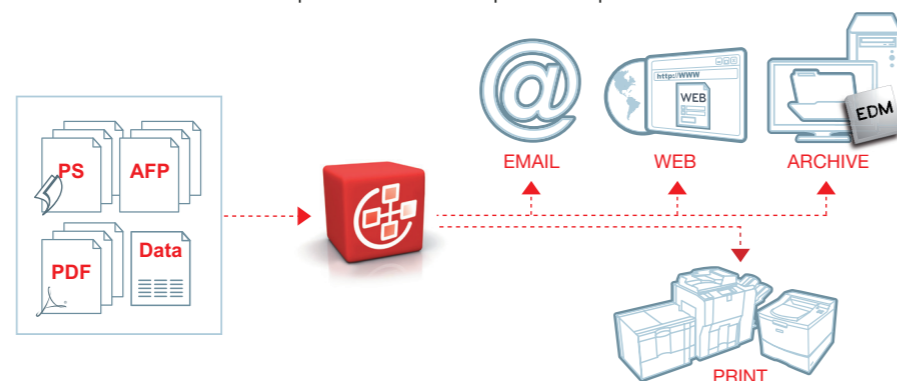
### Supported Platforms

- Windows® XP
- Windows® Vista
- Windows® 7
- Windows® Server 2003
- Windows® Server 2008
- Solaris 10 on SPARC
- Linux 2.6 on I586

+PReS Enhance supports 32-bit and 64-bit systems

+PReS Enhance is supported on servers virtualized on VMWare

**Requirements:** Sun Java SE



## +PReS Enhance Powerful output management tool Features that set PrintSoft apart

Intuitive graphic user interface ensures very flexible and simple-to-use software for organizations with varying IT environments. The ease of use also enables quick implementation times.

Unique optimization of documents produces tremendously fast print and download speeds for output documents, important for high volume organizations and outsource print companies.

Dedicated support team provides exceptional support from proof of concept to training staff guaranteeing customer satisfaction.

Repurpose  
Re-engineer

# Optimization

# What can +PReS Enhance do for you?

