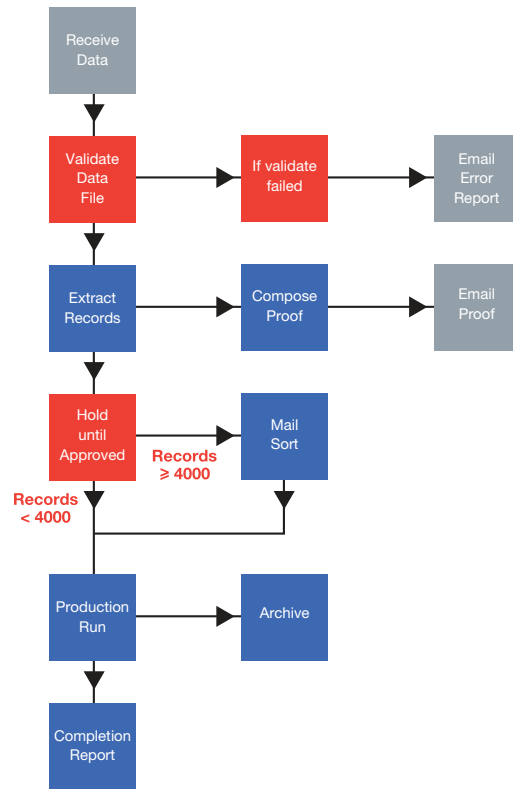


- 1 Log into +PReS Automate in a Web Enabled Interface
- 2 Drag-and-Drop processes into workflow
- 3 Add parameters, schedules, and business logic
- 4 Process flow control
- 5 Define status reports and notification messages
- 6 Activate and monitor



Centralised control for automated production: simple, effective, time-saving

+PReS Automate is a workflow management system geared to the needs of high-volume production print sites. It provides a framework for the automation and control of the various processes a job needs to go through from data receipt to enveloping.

In its simplest form, it can be used to automate single print requests. It can also be the engine that makes the automated decisions within a complex processing environment. With +PReS Automate you can even handle overnight data receipt and processing ready for printing in the morning.

+PReS Automate simplifies the tedious task of processing individual or inter-related jobs. It can handle thousands of jobs per day with the most complex scheduling requirements.

+PReS Automate's open and flexible architecture allows many different job types with a virtually infinite number of process variations to co-exist within a single system. Print formatting systems (such as PReS), pre-processing routines (such as data cleansing, data corrections and mailsorting) and post-processing facilities (such as archive system uploads) can all be included in a single workflow. When multiple systems of each kind are available, +PReS Automate can balance between them and react appropriately.

Features & Benefits

Business critical advantages

- Real-time overview & control of the entire system
- Ensure that Client SLAs are met, every time
- Automation & repeatability greatly reduces risk of error
- Real-time reporting allows better control of resources
- Streamlining of processes increases capacity & workload

Cost Savings

- Reduced manual intervention
- Jobs are completed more quickly
- Multiple jobs can be run simultaneously
- Processing window is extended (out of hours processing)

Reliability and Predictability

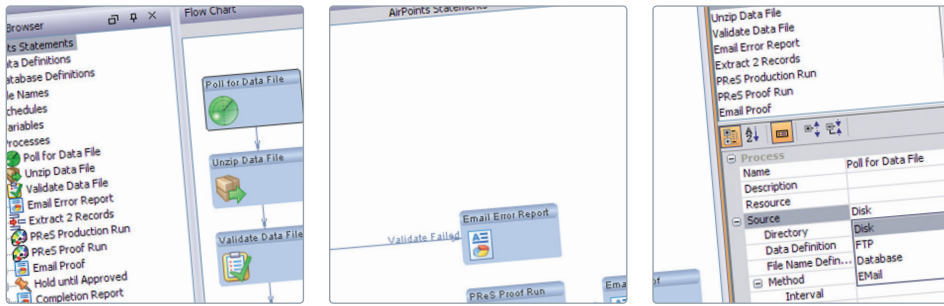
- Automation of repetitive tasks means less scope for error
- Repeatability of tasks, regardless of staff availability
- Built-in disaster and error recovery

Production Control & Reporting

- Easy to use visual design tool
- Job complexity hidden from Print Operators
- Centralised production management controlled via Web Enabled Interface
- Business wide reporting using Web Enabled Interface and in-house MIS
- Complete job audit trails created as standard

Added value to your clients

- Automatic job submission (24/7)
- Job reports & proofs emailed directly to client
- Delay jobs until mailsort quantities are reached
- Schedule jobs to meet Client/Postal timeframes



A complete Workflow Management Solution

Proactive monitoring features include output file retention, alert notification, error handling options and hold, terminate or process only on failure.

The web-enabled operator GUI provides a centralised view of all jobs.

+PReS Automate and PReS complement each other perfectly. +PReS Automate can load balance across multiple PReS formatting channels/engines to maximise output in a spooling environment, receiving back print-ready jobs for onward scheduling. +PReS Automate monitors job progress through PReS systems and provides job recovery.

Process Control

Running and controlling processes can be as simple as scheduling database updates, or as complicated as load balancing processor intensive tasks across multiple systems, with sequenced procedures that rely upon one process to complete before the next one commences. +PReS Automate can control processes such as database management, archive updates, health checks, data de-duplication, merge/purge and mailsort, data and format conversions and compression.

Processes may be defined on a system, job or file basis and are configurable by the user. Processes may be carried out in any order, any number of times and may be dependent on the result of any other process within the defined workflow.

+PReS Automate provides easily configurable options for:

- Error recovery between printers
- Intelligent load balancing between devices
- Intelligent printer clustering
- Central control and monitoring of the status of printer devices and jobs across the entire organisation

MIS and Audit

The intuitive web-enabled GUI allows you to configure, create and monitor jobs within the system. +PReS Automate provides pre-defined approval steps, access rights, roles and clear accountability. Being able to manage, control and monitor each job through the system allows you to meet your Service Level Agreements (SLAs) whilst ensuring efficient use of machine and people resources.

Providing Complex, Integrated solutions

+PReS Automate examines each data file against a database to determine the type of print job. The data file is then sent to one of a "cluster" of Agent systems that format the data and drive the printers directly. On completion, the data is archived for a configurable number of days before being deleted automatically. The status of any job anywhere in the system is logged in the database and operators can tell at a glance the position of the job.

Data Receipt & Validation

+PReS Automate's flexible configuration framework allows seamless integration with various systems (e.g. Accounting, CRM) and platforms. Pulling files, checking them, pushing them, guaranteeing their delivery and archiving them — all simple but important activities the +PReS Automate can do with guaranteed reliability.

PrintSoft

AN OBJECTIF LUNE COMPANY

About PrintSoft

PrintSoft is globally recognised as the pioneer of variable data composition technology for high speed printing.

PrintSoft provides software solutions for creating highly personalised, dynamic documents for transactional, direct-mail, white mail and transpromotional applications.

PrintSoft has the largest installed base of service bureaux clients in the world. With installations in over 50 countries, PrintSoft offers its customers unparalleled breadth and depth of expertise.

PrintSoft can provide a customised solution that suits your ongoing needs, enabling you to effectively communicate with your customers.

Contact

PrintSoft Americas

Tel: +1 630 625 5400
Email: sales.us@printsoft.com

PrintSoft Asia Pacific

Tel: +61 (0) 3 8585 2900
Email: sales.au@printsoft.com

PrintSoft France

Tel: +33 (0)1 34 24 34 35
Email: info.fr@printsoft.com

PrintSoft Germany

Tel: +49 (0)89 61 44 17 0
Email: info.de@printsoft.com

PrintSoft Italy

Tel: +39 348 142 41 44
Email: info.it@printsoft.com

PrintSoft UK

Tel: +44 (0)161 368 2808
Email: info.uk@printsoft.com

www.printsoft.com